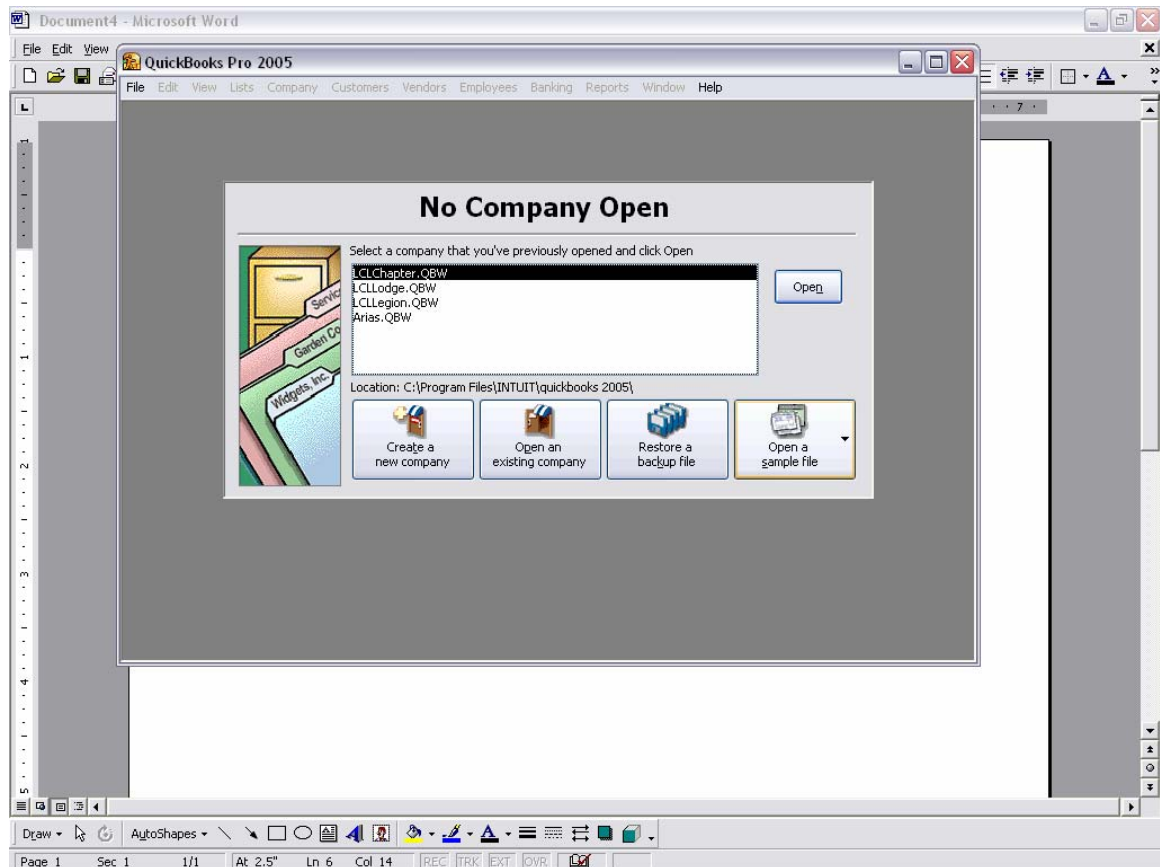
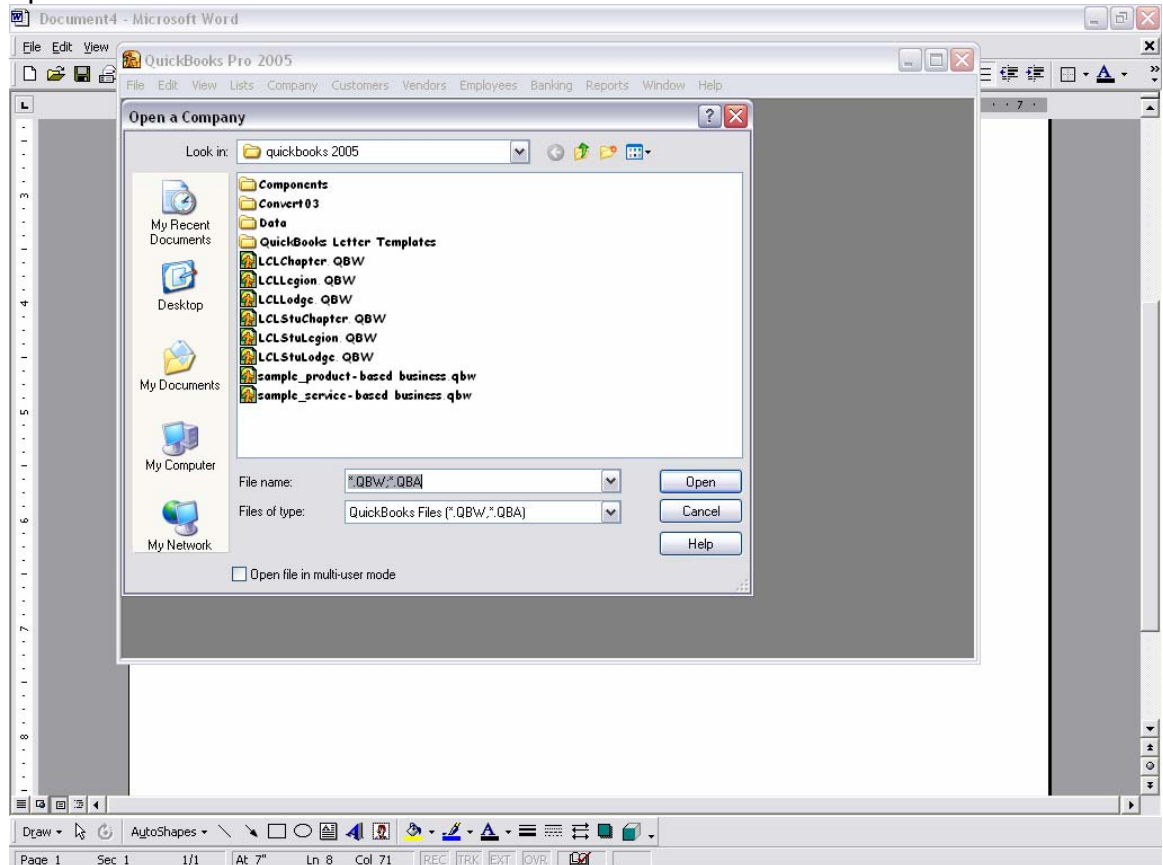


Opening The Correct Company in QuickBooks

- Open **QuickBooks 2005**
- You will get an **“Open Company”** screen or a **“No Company Open”** screen



- Click on “Open an Existing Company”. The following window will open



- Make sure the “Look in:” field has the “quickbooks 2005” folder selected.
 - If a different folder is selected, (i.e. “Quickbooks Pro”) you have to click on the drop down arrow and look for the “quickbooks 2005” folder. It is located in the following directory: **C:\Program Files\Intuit\Quickbooks2005**
- You can now select your company from the list and click on “Open”
 - If you are a **LODGE**; select **LCLLodge.QBW**
 - If you are a **CHAPTER**; select **LCLChapter.QBW**
 - If you are a **LEGION**; select **LCLLegion.QBW**